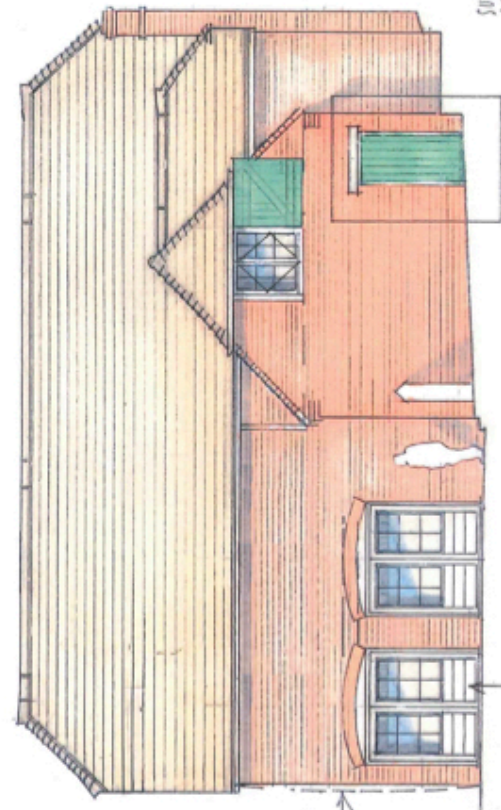


WEST

EXISTING WINDOWS TO BE REFRUBISHED/REFLECTORATED.

EXISTING ARCH BOWED/TO BE STABILISED IN ACCORDANCE WITH STRUCTURAL ENGINEERS' REQUIREMENTS/ DETAILS.

BUIGE IN MAJNURY WALL TO BE STABILISED IN ACCORDANCE WITH STRUCTURAL ENGINEERS' REQUIREMENTS/ DETAILS.



SOUTH

EXISTING ARCH BOWED/TO BE STABILISED IN ACCORDANCE WITH STRUCTURAL ENGINEERS' REQUIREMENTS/ DETAILS.

EXISTING HALF GLAZED TIMBER DOORS TO BE RETAINED.

SUBSQUENCE ISSUES TO I.E. CORNER OF TABLE TO BE APPREHISED IN ACCORDANCE WITH STRUCTURAL ENGINEERS DETAILS.



Rev A - Proposed windows to West/South elevations omitted

DWG N° 18/3158/204 A

PROPOSED ALTERATIONS TO PPLESHAW BARN, APPELESHAW, ANDOVER WEST AND SOUTHELEYS. SCALE: 1:100 @ A3 @ R.R.P.C.M.A.19.